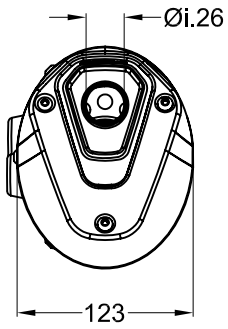
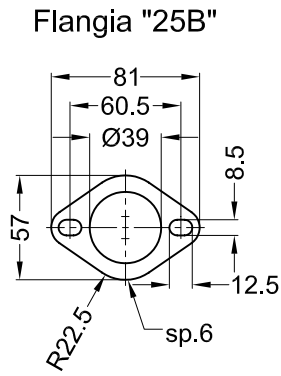


Vista da "A"

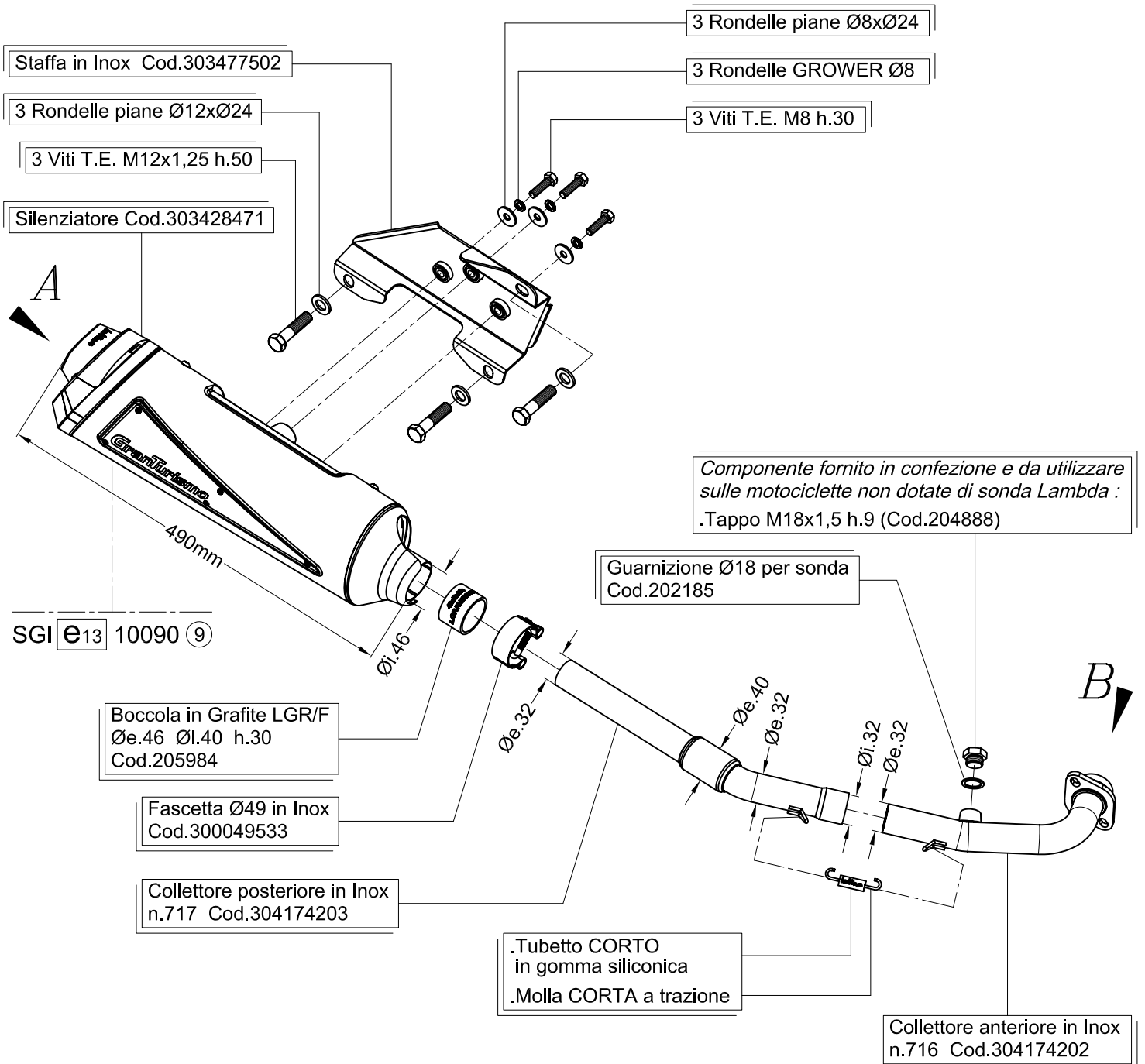


Vista "B"



NOTA:

Prima di installare il silenziatore, fissare la staffa cod.303477502 al telaio (senza serrare completamente la bulloneria).



Art.3477 Silenziatore "GranTurismo" per

MBK KILIBRE 300 (mod.'03)

YAMAHA X-MAX 250 ('06) - X-MAX 250 i.e. ('07/'12)

YAMAHA X-CITY 250 i.e. ('07/'12) - VERSITY 300 ('03/'05)